

**Kiowa & Crowley County, CO**  
**1,129± Acres CRP Farmland**  
**Haswell, Colorado**

**Listing Price:**  
**\$819,078**  
**\$640 per acre**



**LISTING # 24013**



*Call me today!*

**VIRGIL GEORGE, EMPLOYING BROKER**

**VG@RXL.LAND**

Office: 719-346-5420 | Mobile: 719-349-1966

1510 Rose Avenue | Burlington, CO 80807

**Licensed in Colorado, Kansas & Nebraska**

**Your Local AuctionTime.com Representative**  
**Call to List your Equipment Today!**

**www.rockingxland.com**



*Where a Handshake Still Means Something!*

NOTICE \* BROKER HAS GATHERED INFORMATION FROM SOURCES DEEM RELIABLE. ALTHOUGH BROKER MAKES NO WARRANTIES EXPRESSED OR IMPLIED. BROKER SHALL BE REPRESENTING AS A TRANSACTION BROKER. VIEW ADDITIONAL INFORMATION AND PROPERTIES AT [WWW.ROCKINGXLAND.COM](http://WWW.ROCKINGXLAND.COM)

## FEATURES:

### KIOWA COUNTY CRP

- Tract #1 - SW4 24-T20S-R53W, 127.54 ac./ \$2,627.32 / expires 9/30/2032  
Listing Price: \$76,302 Taxes for Tract 1 & 2: \$505.96
- Tract #2 - W2 25-T20S-R53W, 279.94 ac. / \$5,341.26 / expires 9/30/2032  
Listing Price: \$155,119
- **SOLD** Tract #3 - N2 14-T19S-R50W, 320.9 ac. / \$6,145.24 / expires 9/30/2032  
Listing Price: \$178,468 Taxes: \$437.90
- **SOLD** Tract #4 - N2 23-T19S-R50W, 316.38 ac. / \$7,048.95 / expires  
9/30/2032 Listing Price: \$204,714 Taxes: \$437.90
- **SOLD** Tract #5 - Tract in 25-T19S-R52W, 114.87 ac. / \$2,366.32 / expires  
9/30/2032 Listing Price: \$68,722 Taxes: \$121.92
- Tract #6 - NE4 21-T20S-R51W, 152.14 ac. / \$2,660.93 / expires 9/30/2032  
Listing Price: \$93,570 Taxes for Tracts 6 & 7: \$417.08
- **SOLD** Tract #7 - NW4 22-T20S-R51W, 157.55 ac. / \$3,221.90 / expires  
09/30/2032 Listing Price: \$93,570
- **SOLD** Tract #8 - NE4 10-T19S-R50W, 166.94 ac. / \$3,355.49 / expires  
09/30/2032 Listing Price: \$97,449 Taxes for Tracts 8, 9 & 10: \$1,102.68
- **SOLD** Tract #9 - N2 11-T19S-R50W, 318.24 ac. / \$6,654.40 / expires  
09/30/2032 Listing Price: \$193,255
- **SOLD** Tract #10 - W2 1-T19S-R50W, 342.84 ac. / \$8,520.55 / expires  
09/30/2032 Listing Price: \$247,452
- **U/C** Tract #11 - N2 10-T19S-R52W, 313.45 ac. / \$5,544.93 / expires  
09/30/2030 Listing Price: \$161,035 Taxes: \$337.32

### CROWLEY COUNTY CRP

- Tract #12 - Tracts in 2 & 11-T20S-R55W, 244.95 ac./\$8,492.42/ exp. 9/30/2032  
Listing Price: \$246,635 Taxes: \$236.72



*call me today!*

**VIRGIL GEORGE**, EMPLOYING BROKER

VG@RXLLAND

Office: 719-346-5420 | Mobile: 719-349-1966

1510 Rose Avenue | Burlington, CO 80807

Licensed in Colorado, Kansas & Nebraska

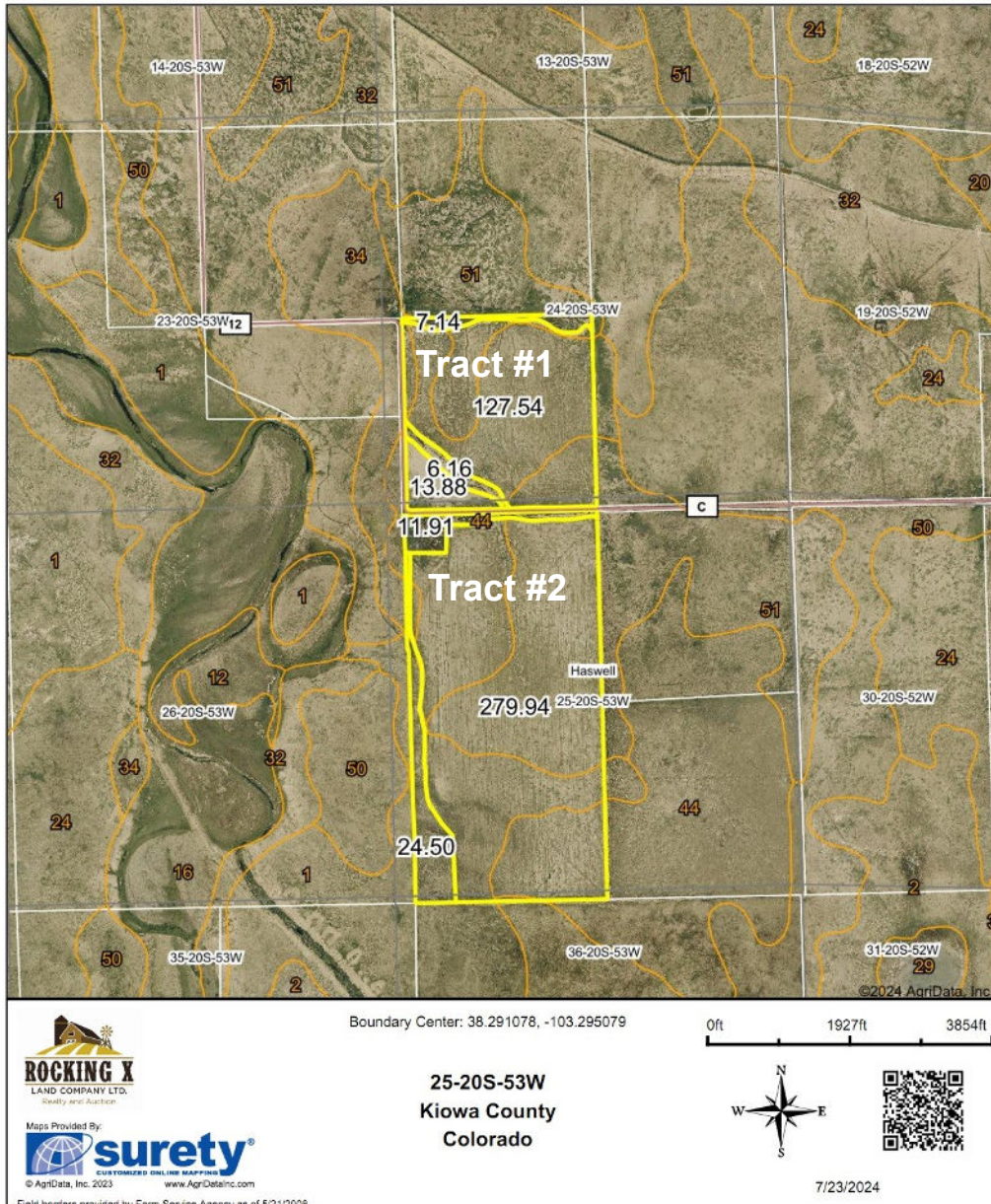
Your Local AuctionTime.com Representative  
Call to List your Equipment Today!

[www.rockingxland.com](http://www.rockingxland.com)



*Where a Handshake Still Means Something!*

Aerial Map



*call me today!*

**VIRGIL GEORGE**, EMPLOYING BROKER

VG@RX.LAND

Office: 719-346-5420 | Mobile: 719-349-1966

1510 Rose Avenue | Burlington, CO 80807

Licensed in Colorado, Kansas & Nebraska

Your Local AuctionTime.com Representative  
Call to List your Equipment Today!

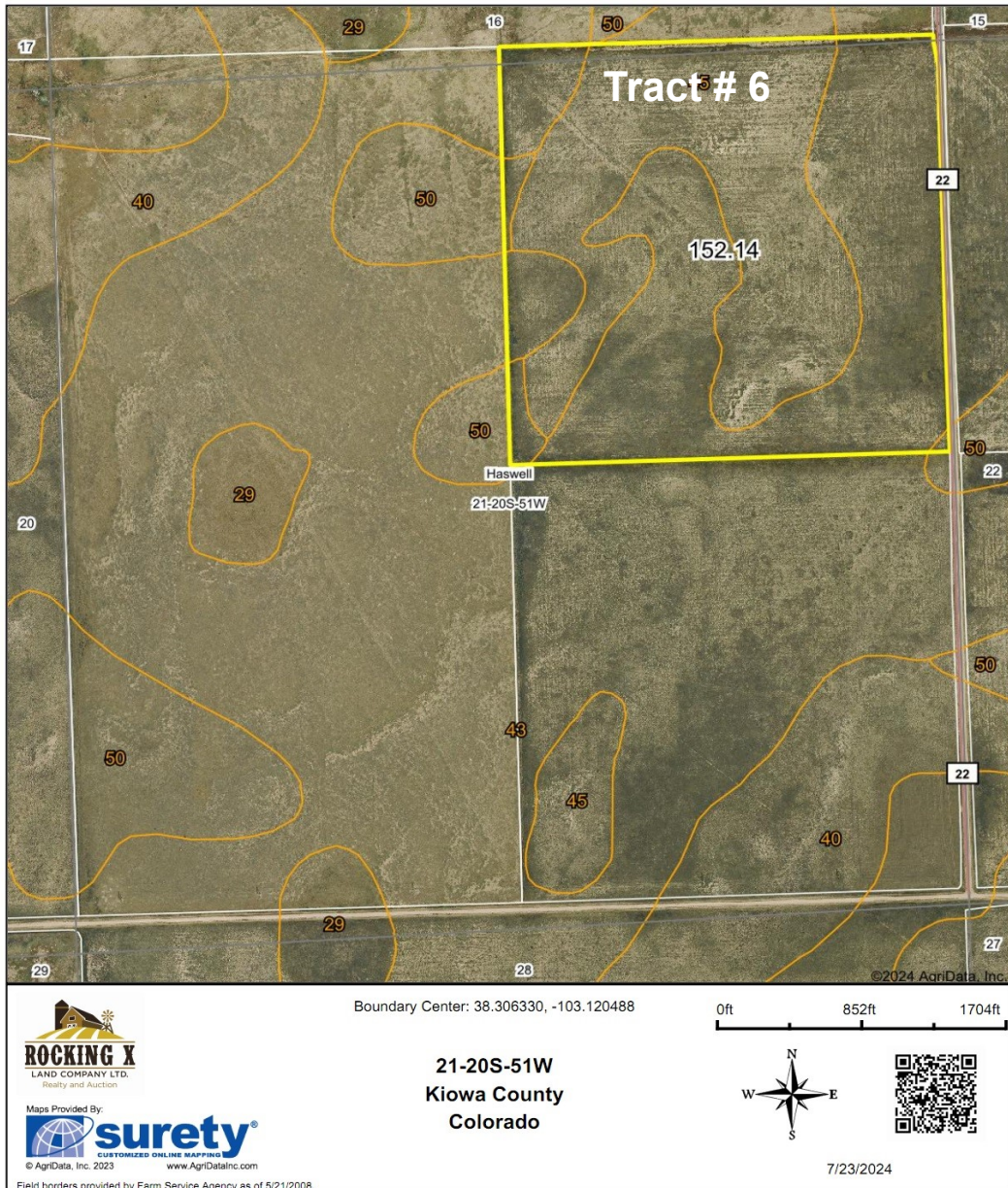
[www.rockingxland.com](http://www.rockingxland.com)



*Where a Handshake Still Means Something!*

NOTICE \* BROKER HAS GATHERED INFORMATION FROM SOURCES DEEM RELIABLE. ALTHOUGH BROKER MAKES NO WARRANTIES EXPRESSED OR IMPLIED. BROKER SHALL BE REPRESENTING AS A TRANSACTION BROKER. VIEW ADDITIONAL INFORMATION AND PROPERTIES AT [WWW.ROCKINGXLAND.COM](http://WWW.ROCKINGXLAND.COM)

Aerial Map



*call me today!*

**VIRGIL GEORGE**, EMPLOYING BROKER

VG@RXL.LAND

Office: 719-346-5420 | Mobile: 719-349-1966

1510 Rose Avenue | Burlington, CO 80807

Licensed in Colorado, Kansas & Nebraska

Your Local AuctionTime.com Representative  
Call to List your Equipment Today!



[www.rockingxland.com](http://www.rockingxland.com)

*Where a Handshake Still Means Something!*

NOTICE \* BROKER HAS GATHERED INFORMATION FROM SOURCES DEEM RELIABLE. ALTHOUGH BROKER MAKES NO WARRANTIES EXPRESSED OR IMPLIED. BROKER SHALL BE REPRESENTING AS A TRANSACTION BROKER. VIEW ADDITIONAL INFORMATION AND PROPERTIES AT [WWW.ROCKINGXLAND.COM](http://WWW.ROCKINGXLAND.COM)

Aerial Map



*call me today!*

**VIRGIL GEORGE**, EMPLOYING BROKER

VG@RXL.LAND

Office: 719-346-5420 | Mobile: 719-349-1966

1510 Rose Avenue | Burlington, CO 80807

Licensed in Colorado, Kansas & Nebraska

Your Local AuctionTime.com Representative  
Call to List your Equipment Today!

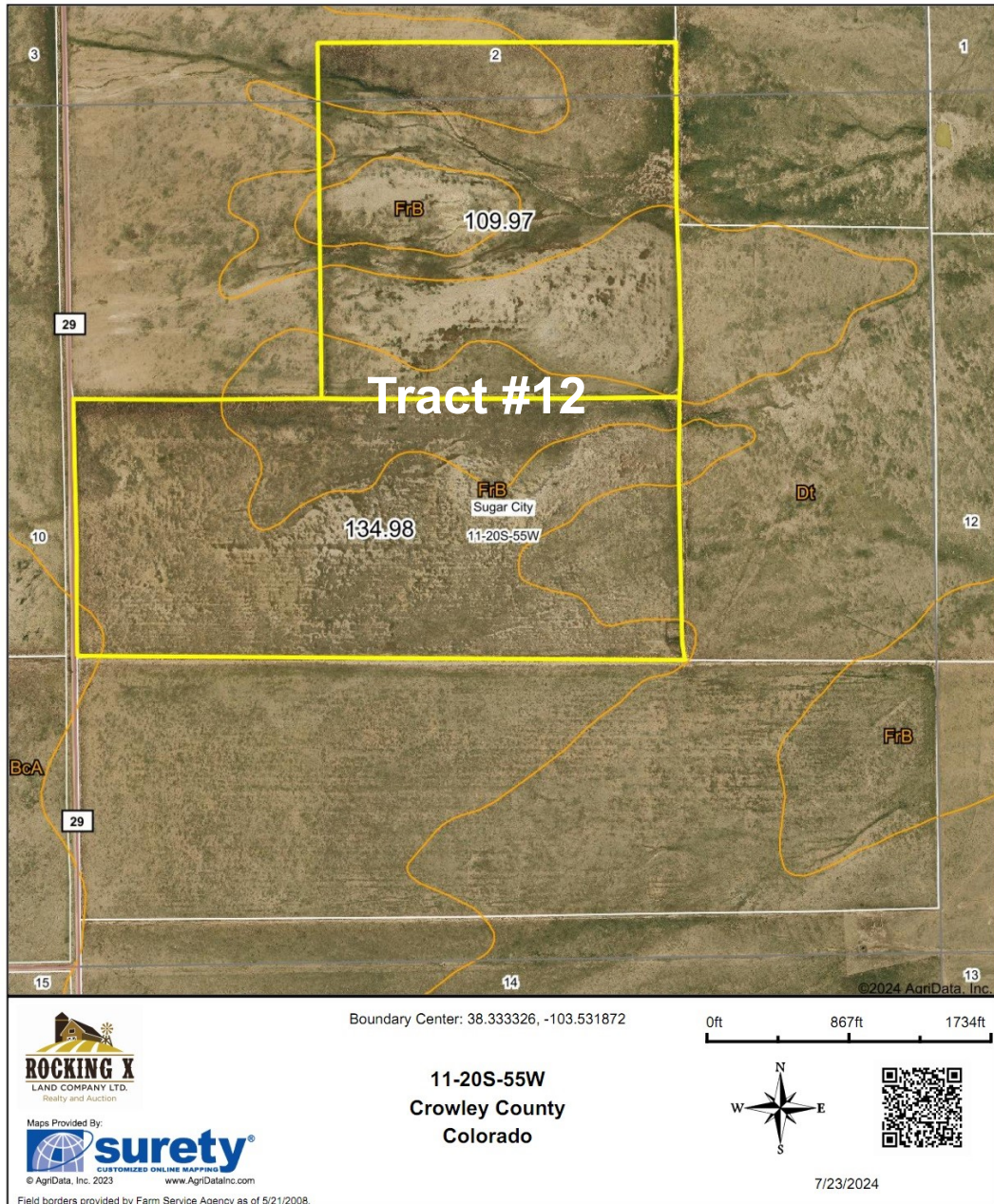


[www.rockingxland.com](http://www.rockingxland.com)

*Where a Handshake Still Means Something!*

NOTICE \* BROKER HAS GATHERED INFORMATION FROM SOURCES DEEM RELIABLE. ALTHOUGH BROKER MAKES NO WARRANTIES EXPRESSED OR IMPLIED. BROKER SHALL BE REPRESENTING AS A TRANSACTION BROKER. VIEW ADDITIONAL INFORMATION AND PROPERTIES AT [WWW.ROCKINGXLAND.COM](http://WWW.ROCKINGXLAND.COM)

Aerial Map



*call me today!*

**VIRGIL GEORGE**, EMPLOYING BROKER

VG@RXL.LAND

Office: 719-346-5420 | Mobile: 719-349-1966

1510 Rose Avenue | Burlington, CO 80807

Licensed in Colorado, Kansas & Nebraska

Your Local AuctionTime.com Representative  
Call to List your Equipment Today!



[www.rockingxland.com](http://www.rockingxland.com)

*Where a Handshake Still Means Something!*

NOTICE \* BROKER HAS GATHERED INFORMATION FROM SOURCES DEEM RELIABLE. ALTHOUGH BROKER MAKES NO WARRANTIES EXPRESSED OR IMPLIED. BROKER SHALL BE REPRESENTING AS A TRANSACTION BROKER. VIEW ADDITIONAL INFORMATION AND PROPERTIES AT [WWW.ROCKINGXLAND.COM](http://WWW.ROCKINGXLAND.COM)